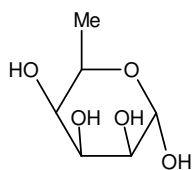
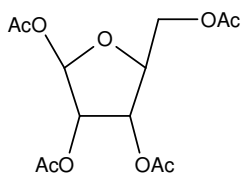


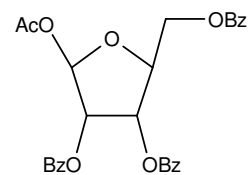
Monosaccharide-Building Blocks (on stock)



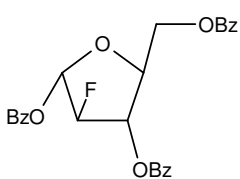
[162427-44-3]
6-Deoxy- α -D-talose



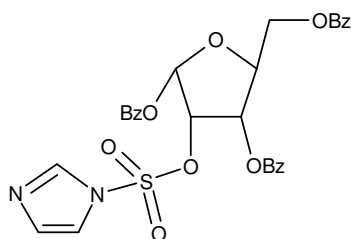
[144490-03-9]
Tetraacetyl-L-ribose



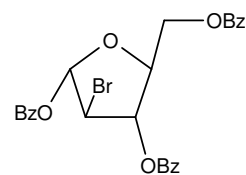
[3080-30-6]
2,3,5-Tribenzoyl-1-acetyl- β -L-ribose



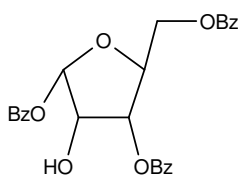
[171721-00-9]



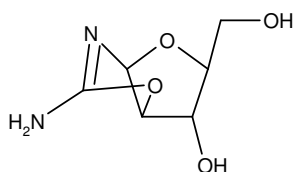
[171720-99-3]



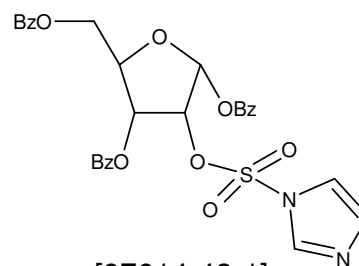
CAS-unknown



[171866-30-1]

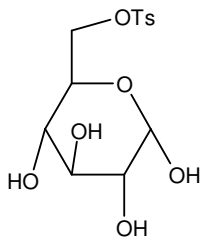


[35939-60-7]

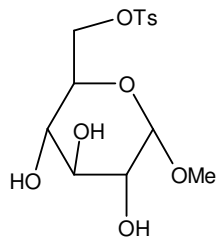


[97614-42-1]

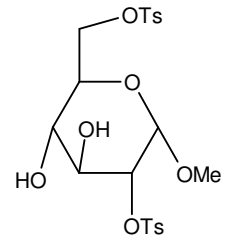
Monosaccharides 2



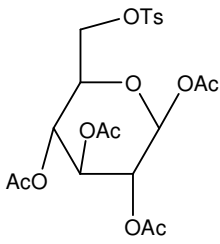
[26391-80-0]



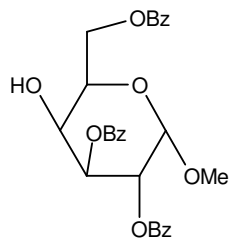
[6619-09-6]



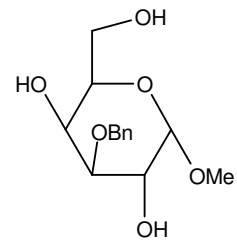
[54497-89-1]



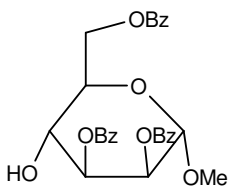
[6619-10-9]



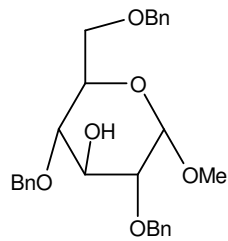
[3601-36-3]



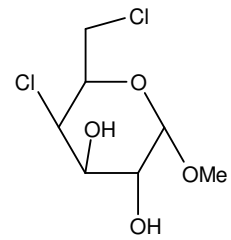
[81371-52-0]



[3396-68-7]



[35303-86-7]



[4990-82-3]